

## MATERIALS

**STEEL** - Iron and carbon alloy with carbon percentage lower than 2% treated to resist atmospheric agents.

**MAINTENANCE** - To keep the product in good condition for a long time, we recommend storing it during the winter in closed and dry places in order to avoid condensation. Before the winter season and on a quarterly basis, if the products are stored near the sea, it is recommended to clean the metal surfaces with a soft cloth using water or detergents and protect them with vaseline oil or car wax.

**ALUMINUM** - Aluminum alloys, particularly suitable for cold working and for die casting, treated appropriately to resist atmospheric agents and powder coated.

**MAINTENANCE** - To keep the product in good condition for a long time, we recommend a correct periodic cleaning, particularly frequent in places characterized by high humidity and marine climate. It is recommended to clean the surfaces with a soft cloth using water or neutral detergents. Prolonged and uninterrupted exposure to intense UV radiation or very cold temperatures can affect the initial characteristics of the colored aesthetic coating made of polyester. We recommend cleaning and storing products in sheltered places during prolonged periods of non-use and in winter.

**HPL** - Self-supporting material suitable for exposure to the external environment. It consists of layers of Kraft paper impregnated with phenolic resins and a decorative surface layer impregnated with thermosetting resins. These layers are pressed at 9Mp and at a temperature of 150 degrees centigrade.

**MAINTENANCE** - The HPL laminate is easy to clean and does not require any particular maintenance. Most stains can be washed with water only and dried with soft, clean cloths. For persistent stains, use a sponge and a specific laminate cleaner, or glass cleaner. Then remove the traces of these products with a dry cloth to avoid streaks or opacification. We always recommend trying any product in an inconspicuous corner. Avoid using steel scouring pads, products containing abrasive creams, washing powder and acetone.

**PLASTIC MATERIALS** - Plastic surfaces should generally be cleaned with a damp and soft cloth soaked in water, the use of dry cloths which with rubbing could electrostatically charge the plastic surface attracting dust is not recommended. For stubborn stains, neutral liquid soap can be diluted in water in moderation. Absolutely avoid the use of acetone, trichlorethylene, ammonia, or detergents that contain even a small amount of these detergents because they can dull the shine of the surfaces. Absolutely avoid all abrasive substances, such as powder detergents, abrasive pastes, scouring pads or rough sponges. Avoid dragging objects that can scratch the material onto surfaces. Remember also that plastic materials cannot withstand sources of direct heat on the surface, such as direct contact with pots and pans.

**WOOD** - Clean with a damp and soft cloth soaked in warm water. Always dry after cleaning. Immediately remove any liquid substances or other residues to avoid absorption. The wooden surfaces, being the same a natural material, could undergo color changes with use and over time. Remember that woods cannot withstand direct heat sources on the surface. Long-lasting exposure could alter its coloring.

## WARNINGS

Avoid the following improper uses: stand on the product, sit on the back, on the armrests, on the edge of the tables, use the product as a ladder. Do not disperse the product in the environment, but call the companies responsible for the disposal of solid urban waste for transport to landfills and recovery. The table tops in sheet metal / iron are made with a slight deviation of planarity downwards to prevent a "spring effect" from being created during use.

## WARRANTY

The products of the Colos line are guaranteed for five years from structural defects not due to improper use or lack of maintenance and from invasive oxidations not derived from scratches or abrasions from use and not removable with normal cleaning and maintenance. Small irregularities of the product surface are characteristic of the particular paint used and do not in any way affect the intrinsic quality of protection of the product itself. If you intend to make use of the guarantee, you must present the defective item and the purchase receipt to the dealer. Cerantola S.p.A. declines any responsibility for damages caused to things or people deriving from an incorrect use of the product. The warranty does not include any type of assistance or repair of the product or to damaged parts of it.

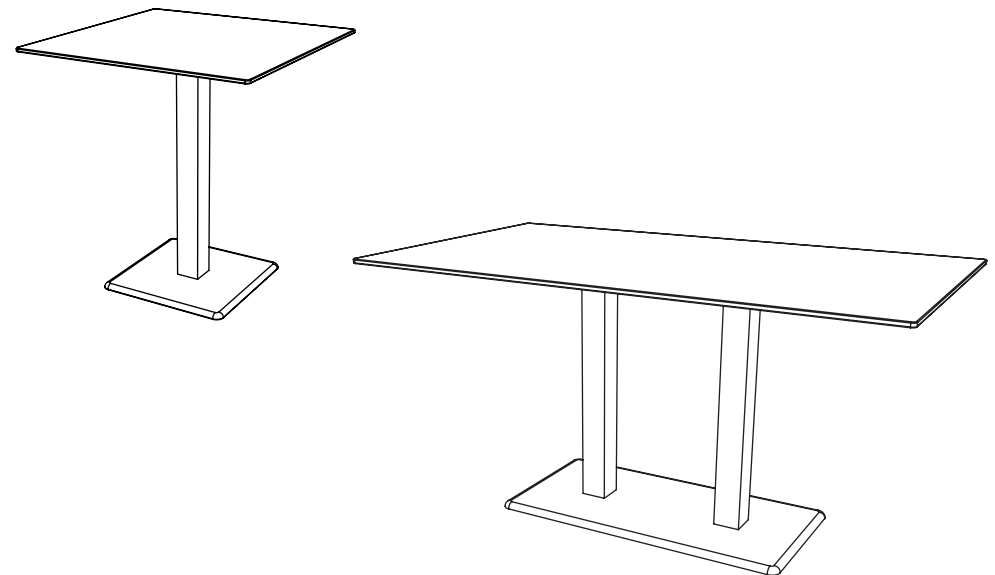
# COLOS

Via Giorgione, 2 - 31033 Ramon di Loria (TV) - ITALY  
Tel. +39 0423 755 013 r.a. - Fax +39 0423 755 152  
[www.colos.it](http://www.colos.it) / [info@colos.it](mailto:info@colos.it)

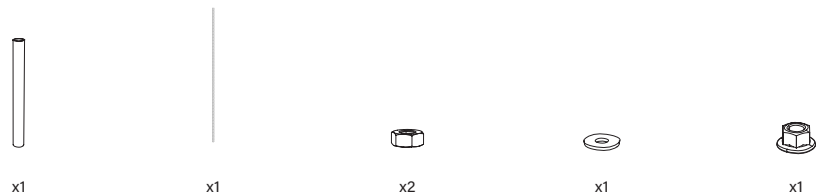
# COLOS

## ASSEMBLY INSTRUCTIONS

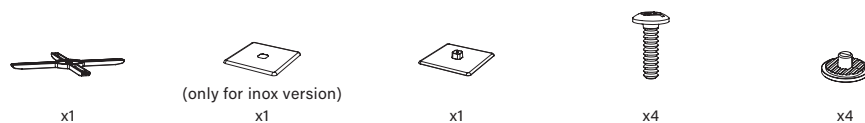
## EDGE by R.D. Colos



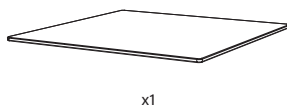
## CONTENTS BOX 1



## CONTENTS BOX 2



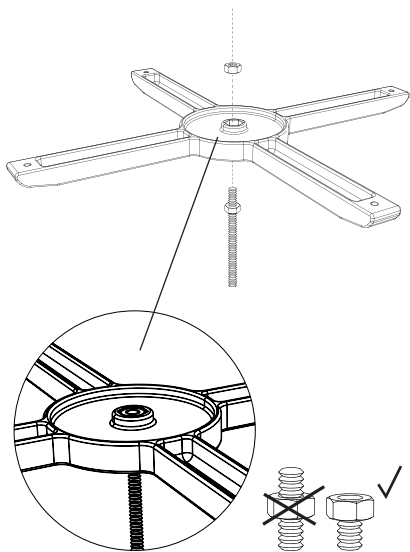
## CONTENTS BOX 3 OPTIONAL



**PAY ATTENTION! Do not work on abrasive surface.**

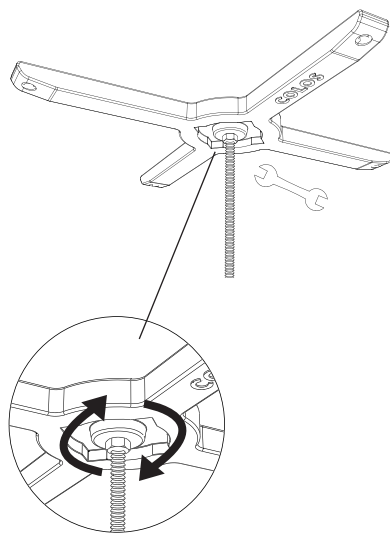
**1.**

Screw the two hex-nut in order to fix the cross support. Ensuring that threaded rod will not interfere with the table top.



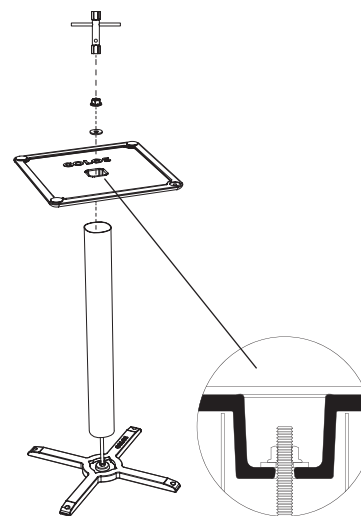
**2.**

Tighten both lower and upper hex-nut to the cross support.



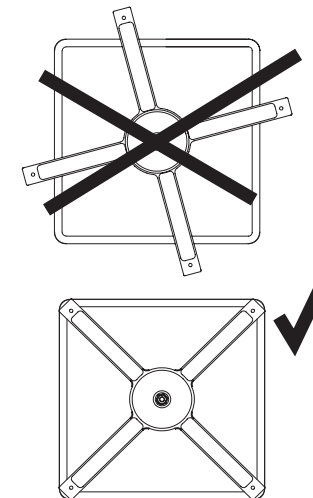
**3.**

Lay the cross support to the ground, insert the threaded rod in one side of the table stem, then screw the base on the other side of the stem using one hex-nut.



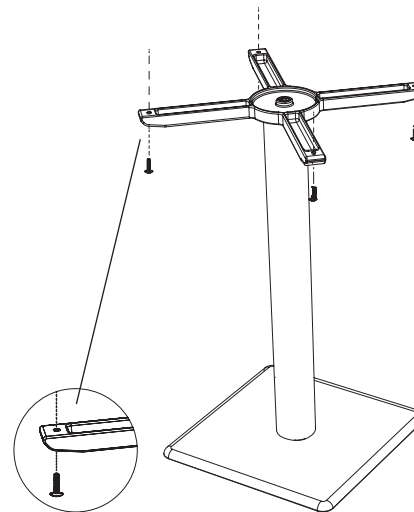
**4.**

Lay the structure on the ground, making sure that the base and plate are perfectly aligned.



**5.**

Use the four screws in the package to fix the table top to the cross support. You will find four dedicated holes on it.



**6.**

Adjust the feet height as desired.

